

EGRESS DESIGN AND GENERAL COMPONENTS

- Administration
 - Definitions
 - System Design
 - Use
 - Occupant Load
 - Width
 - Height
 - Continuity
 - Changes in Elevation
 - Elevators or Escalators
 - Exit Signs
 - Egress Illumination
 - Egress Components
 - Doors
 - Gates
 - Stairways
 - Ramps
 - Element Design
 - Exit Access
 - Travel through intervening rooms
 - Access to exits
 - Separation of exits
 - Travel distance
 - Dead ends
 - Exit
 - Separation of exits
 - Travel distance
 - Travel through intervening rooms
 - Exit discharge
 - Location
 - Access to grade
 - Travel distance
-

Section 1004 EXIT ACCESS

Page 1-111

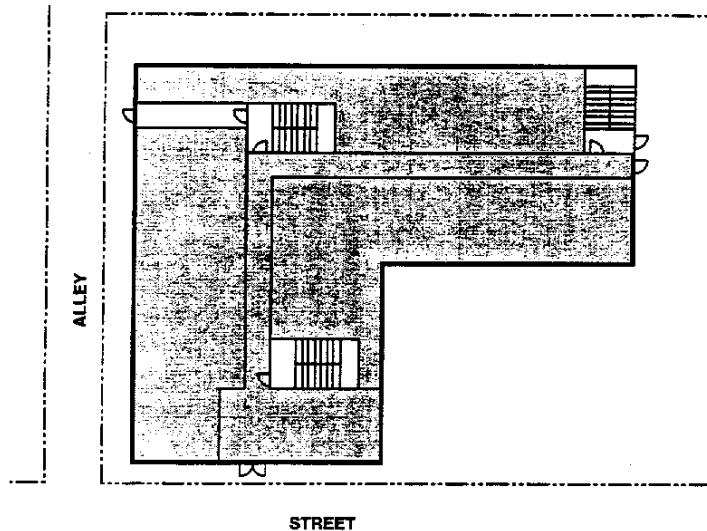
Portion of means of egress between any point within the occupied portion of a building and the door of an exit.

Begins at any occupied point in the building and continues until reaching a door at the exterior of the building, an exit (stair/ramp) enclosure, horizontal exit or an exit passageway.

It is the interior portion of the building where travel distance was measured/regulated in the 1994 UBC.

May or may not provide a protected path of travel.

EXIT ACCESS



Shaded Area = Exit Access

Section 1005 EXIT

Page 1-115

Portion of means of egress between the exit access and the exit discharge or public way.

The part of the means of egress that is separated by an adequate level of protection from all other spaces by construction and protection of openings.

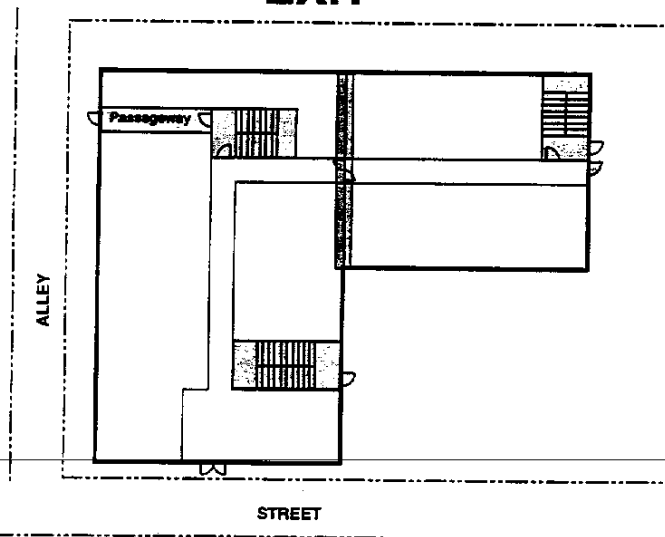
Provides a protected path of travel to an exit discharge.

Travel distance is not an issue once the exit has been reached.

The following four items are exits:

- Exterior exit doors
- Exit enclosures
- Exit passageways
- Horizontal exits

EXIT



Section 1006 EXIT DISCHARGE

Page 1-118

Portion of means of egress between the exit and a public way.

The part of the means of egress after leaving or passing through an exit until reaching the public way or equivalent safe place.

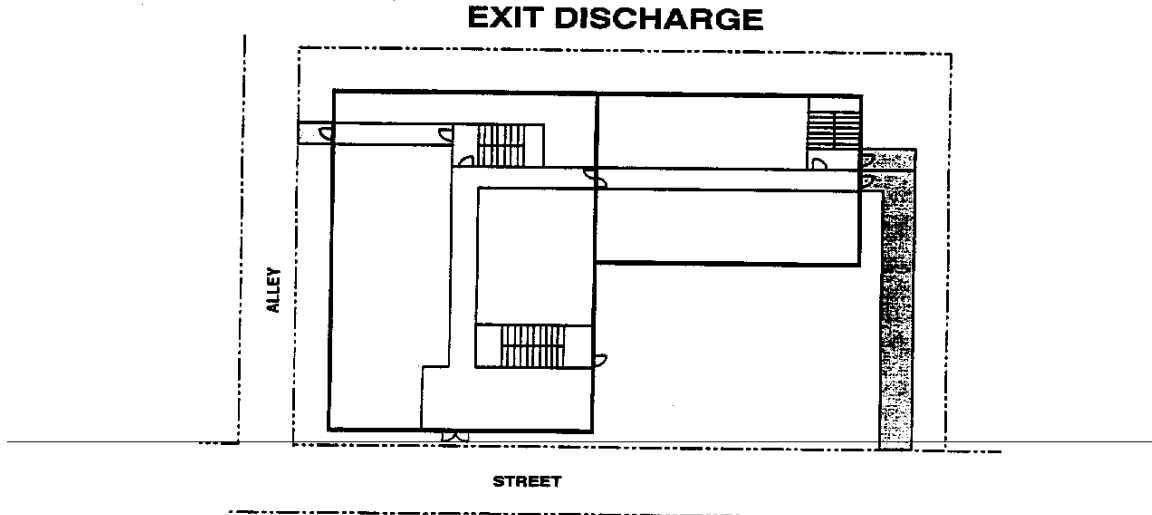
Travel distance at grade level is not limited since it is generally out of and off of the building and the occupant is no longer subject to exposure from events occurring in the building.

Travel distance is limited at other than grade level.

Exterior exit balconies are considered as exit discharge which is different than in other codes.

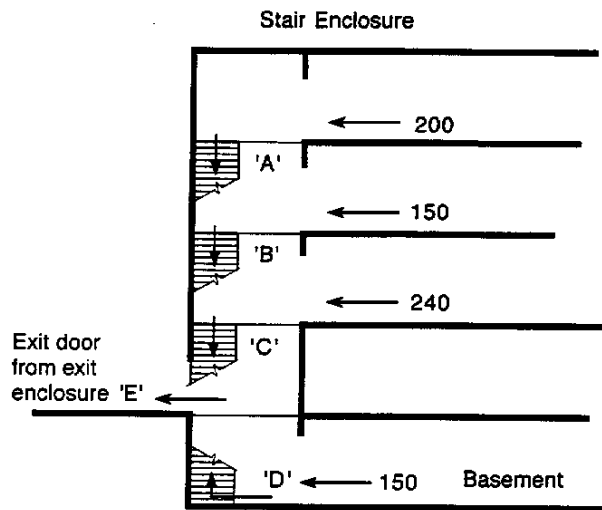
Exit discharge includes:

- Exit courts
- Exterior stairways/ramps
- Exterior exit balconies



Section 1003.2.3.4 EXITING FROM ADJACENT LEVELS

The width of exits from a story is based on the occupant load from that story only and disregards other levels unless a larger egress width is required from those levels.



GIVEN:

- A four-story office building with basement
- Occupant load exiting into stair enclosure at each level as indicated
- First floor occupants exit to exterior without entering the stair enclosure

Exit Element	Occupant Load Served	Required Width
Stair-Point 'A'	200	60"
Stair-Point 'B'	150	60" ¹
Stair-Point 'C'	240	72"
Stair-Point 'D'	150	45"
Door-Point 'E'	390 ²	78"

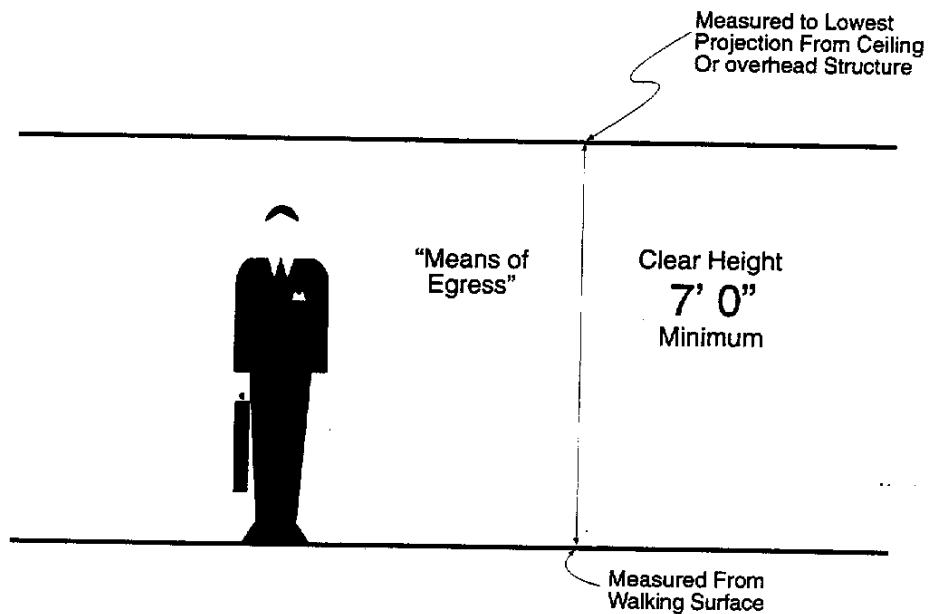
1. Required width from above must be maintained
2. Door at point 'E' serves occupants from 'C' and 'D'

Section 1003.2.4 HEIGHT

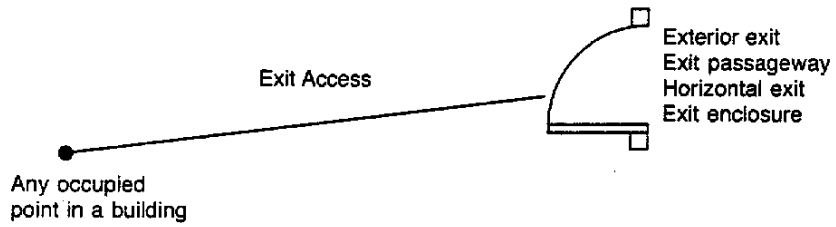
A minimum 7'-0" height is established as a general requirement for the means of egress system.

Specific provisions regulate ceiling height for mezzanines and residential occupancies as well as corridors, ramps, stairways and doors.

Applies to all areas of the means of egress system (access, exit and discharge) unless modified by other sections.



Section 1004.1 EXIT ACCESS



Components within the exit access may include:

- Aisles
- Hallways
- Corridors
- Doors
- Gates
- Stairways
- Ramps

Section 1004.3
EXIT-ACCESS COMPONENTS

3.2 Aisles

3.3 Hallways

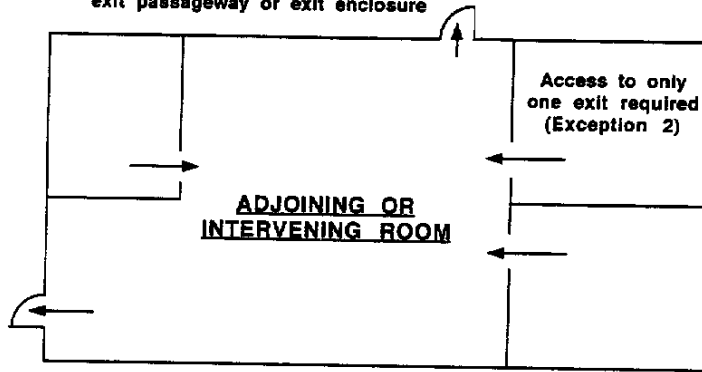
3.4 Corridors

Since exit access describes the vast majority of a building's floor area, the regulation of its components is very important. Aisles, hallways and corridors are unique to the exit access portion of a means of egress system. Other components that may be found within the exit access are doors, gates, stairways and ramps.

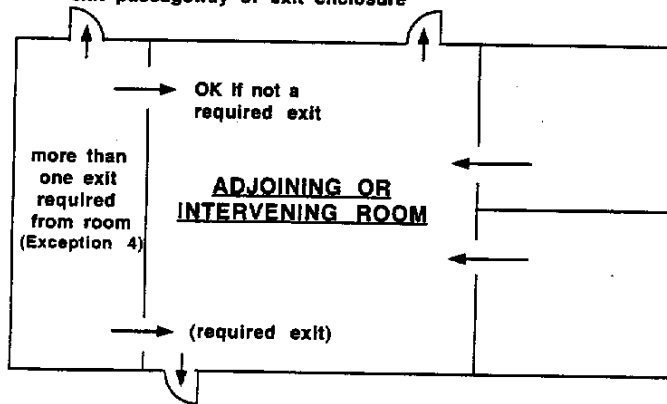
**Section 1004.2.2
TRAVEL THROUGH INTERVENING ROOMS**

Direct access to a exit or to a corridor that provides direct access is required from any portion of a building.
For Exceptions, see 1004.2.2

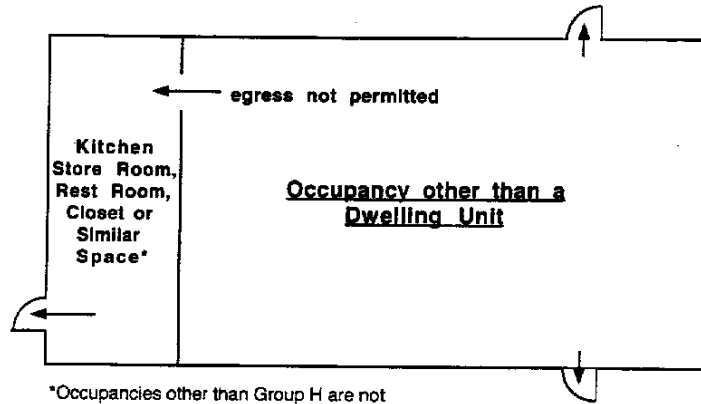
exit corridor, exterior exit door, horizontal exit,
exit passageway or exit enclosure



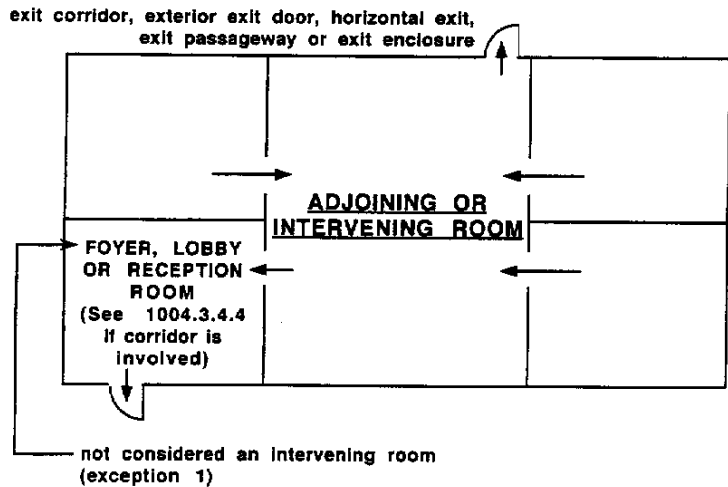
exit corridor, exterior exit door, horizontal exit,
exit passageway or exit enclosure



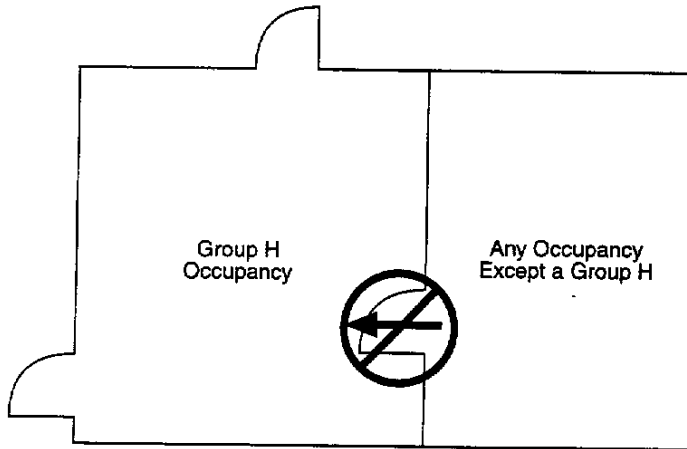
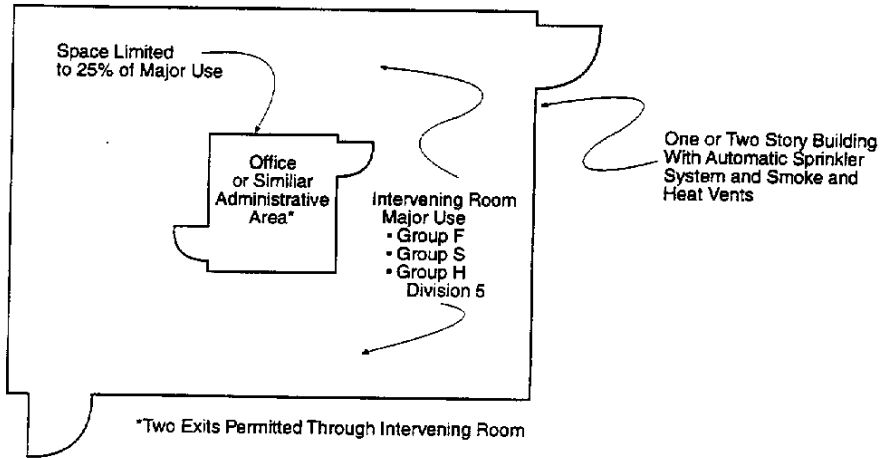
**Section 1004.2.2
TRAVEL THROUGH INTERVENING ROOMS**



*Occupancies other than Group H are not permitted through a space that is a Group H



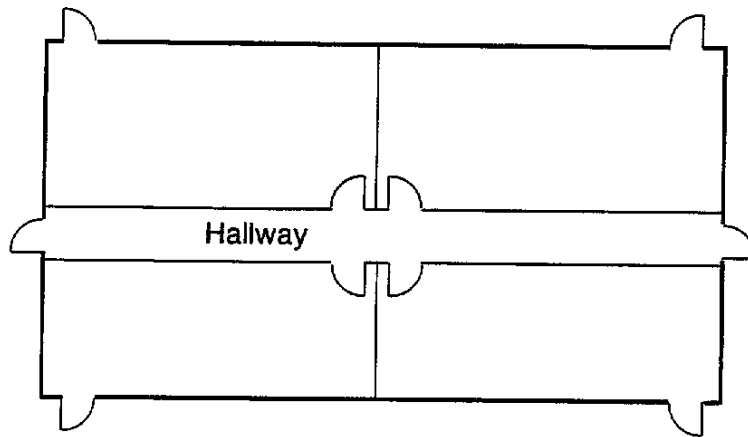
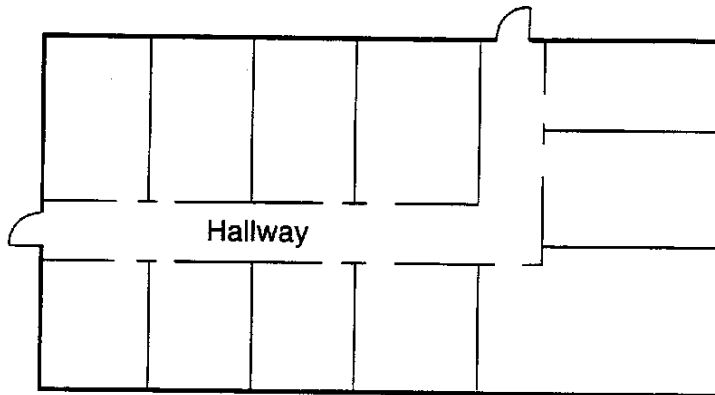
**Section 1004.2.2
TRAVEL THROUGH INTERVENING ROOMS**



Egress not permitted through a H Occupancy from a Non-H Occupancy

**Section 1004.2.2
TRAVEL THROUGH INTERVENING ROOMS**

Hallways shall be considered as intervening rooms

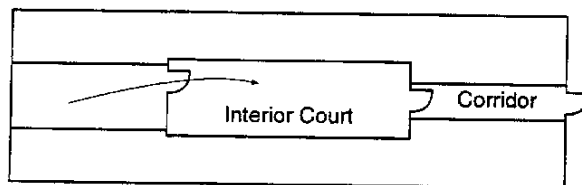


Section 1004.2.2 TRAVEL THROUGH INTERVENING ROOMS

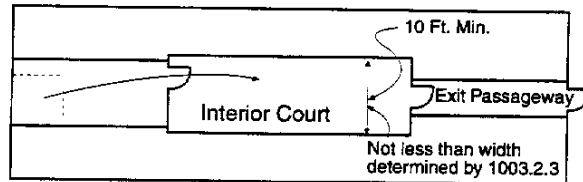
Interior courts are considered as intervening rooms unless they provide direct access to an exit.

Interior courts with direct access to an exit are considered as a portion of the exit access and included in travel distance limitations.

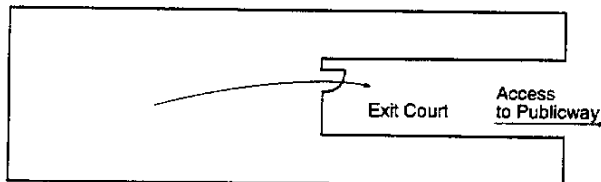
A court that is not bounded on all sides and is a part of the egress system is considered as an exit court and regulated as a portion of the exit discharge.



This Court is Considered As An "Intervening Interior Room". It Is a Part of the Exit Access



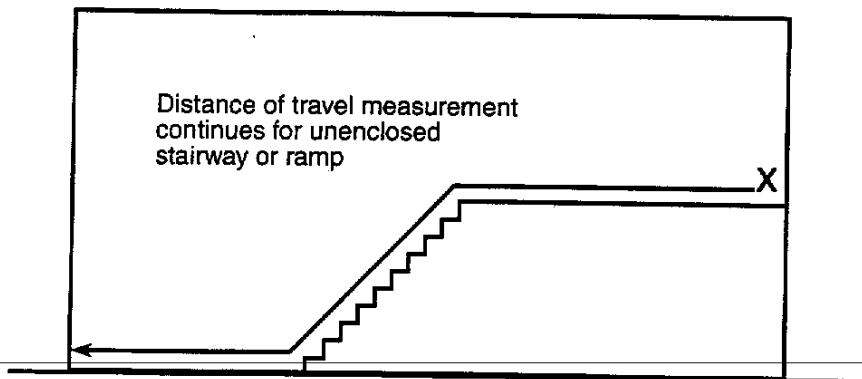
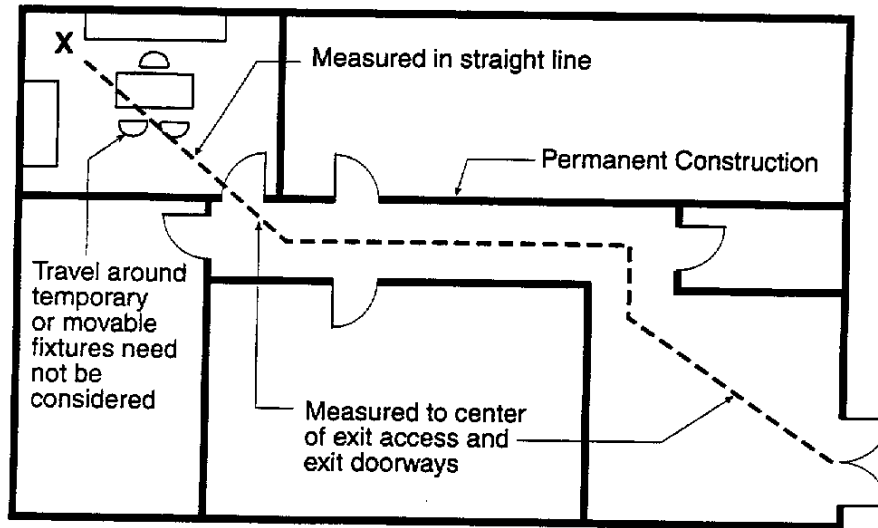
Exception:
This Court is Not Considered An Intervening Room. It Is a Part of the Exit Access.



An "Exit Court" Is A Part of the "Exit Discharge".

Section 1004.2.5 TRAVEL DISTANCE

Travel distance is "that distance an occupant must travel from any point within occupied portions of the exit access to the door of the nearest exit."



Section 1004.3.3 HALLWAYS

Hallways may be used as an exit access component “unless specifically prohibited based on requirements specified elsewhere” in Chapter 10. These would include locations

- Where occupants would travel through adjoining rooms and not be able to comply with Section 1004.2.2 exception.
- Where travel distance requirements could not be met.

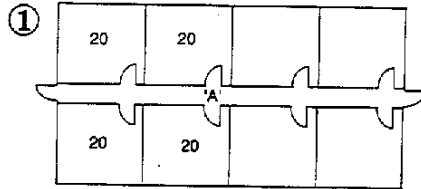
Walls which form hallways:

- May be of any height (if 6 feet or less in height, walls are not considered as forming a hallway)
- Do not require fire-resistive rating unless required by some other provision (type of construction, occupancy separation, etc.)
- May have any amount or type of openings unless protection required by other section.

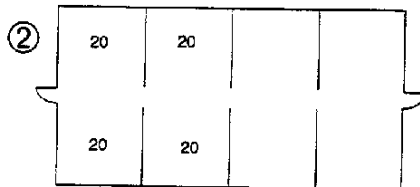
Hallways in Group R, Division 1 or Group I Occupancies with an occupant load of 10 or more are required to comply with corridor provisions

Hallway Versus Corridor

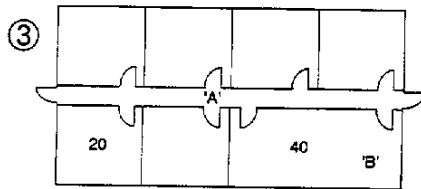
Given Office Spaces
with 20 occupants in each space



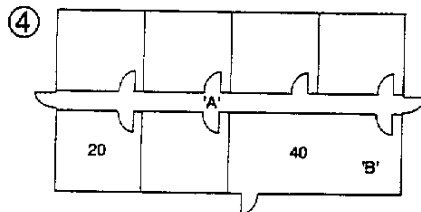
Space 'A' may be considered as a hallway provided travel distance limitations are met



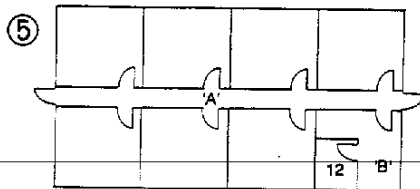
Although space 'A' was considered a hallway in example 1 and it did not limit the amount/size of openings into the hallway, when the walls were removed, the offices do not comply with 1004.2.2. This layout would not be permitted.



Space 'A' would need to be considered as a corridor since the layout could not comply with 1004.2.2 this is due to office 'B' having two egress paths through space 'A'.



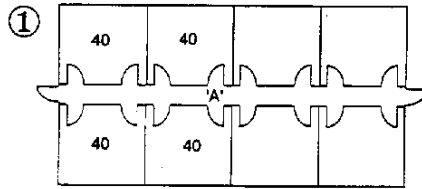
Space 'A' may be considered as a hallway provided travel distance limitations are met. With the additional door, office 'B' can comply with 1004.2.2.



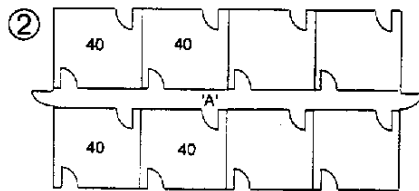
Space 'A' would need to be considered as a corridor since the layout could not comply with 1004.2.2. This is due to office 'B' having an interior room which has gone through one intervening room prior to reaching space 'A'.

Hallway Versus Corridor

Given Office Spaces
with 40 occupants in each space

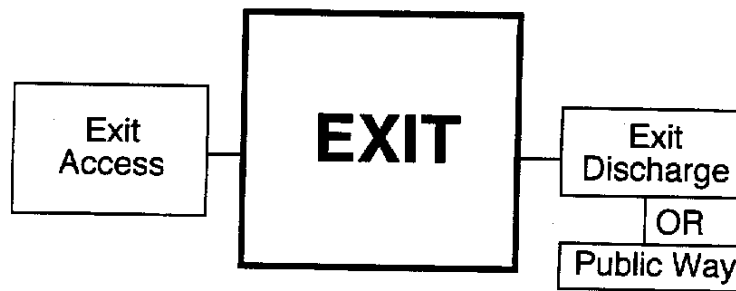


Space 'A' would need to be considered as a corridor since the layout could not comply with 1004.2.2. Since the spaces only have access to the exits by going through space 'A' the corridor protection is needed to assure the path is available.



Space 'A' could be considered as a hallway. Since the office spaces have direct access to an exit and therefore have a separate egress path available to them, the protection of space 'A' is not as important as it was in example 1 above.

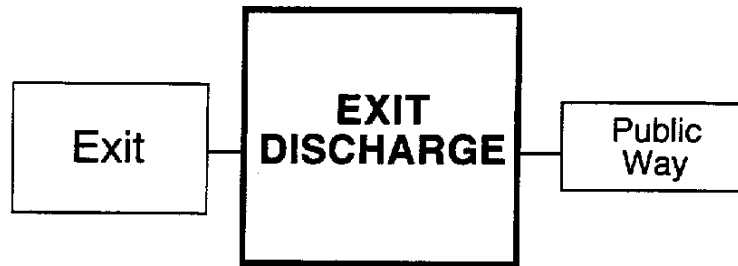
**Section 1005.1
EXIT**



Components selectively included in the exit may include:

- Exterior Exit Doors
- Exit Enclosures
- Exit Passageways
- Horizontal Exits

**Section 1006.1
EXIT DISCHARGE**



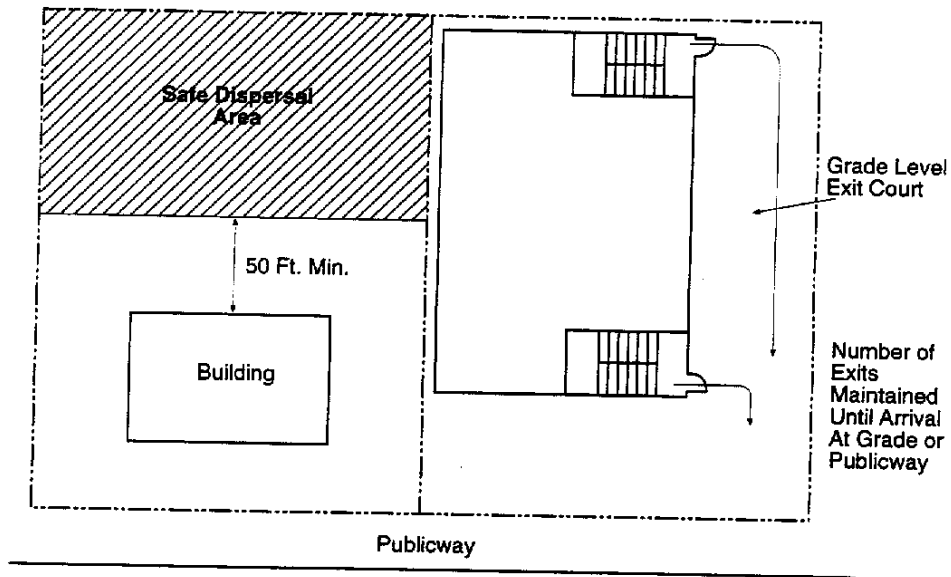
Components selectively included in the exit discharge include:

- **Exterior Exit Balconies**
 - **Exterior Exit Stairways**
 - **Exterior Exit Ramps**
 - **Exterior Courts**
 - **Yards**
 - **Gates**
-
-

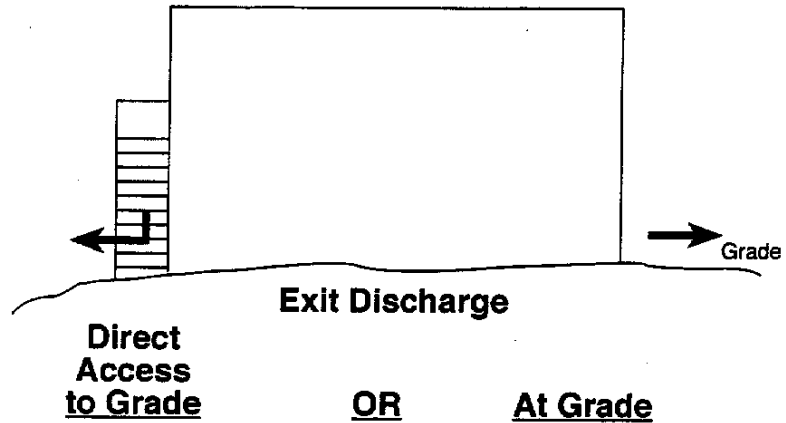
Section 1006.1 & 1004.2.3.1 ACCESS TO EXITS AND DISCHARGE

A safe dispersal area may be used instead of extending means of egress to public way.

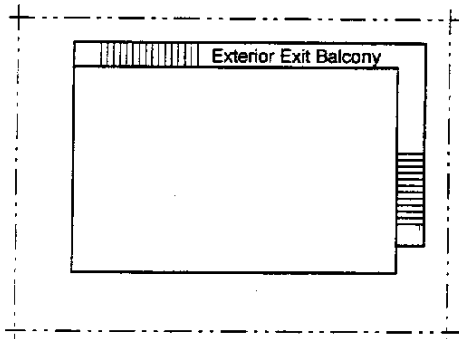
The maximum number of exits required must be maintained until they arrive at "grade" or the public way.
(Section 1004.2.3.1)



**Section 1006.2.1
LOCATION OF EXIT DISCHARGE**

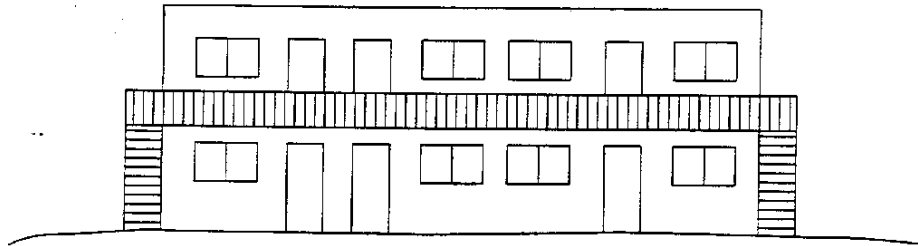


- **Exit discharge shall not reenter building**



Exterior exit balconies, Exterior exit stairways and Exterior exit ramps shall not be located in areas where building openings are prohibited or required to be protected by Table 5-A

Section 1006.2.2
ACCESS TO GRADE



Where the exit discharges at other than grade, at least two separate paths of travel to grade level required

Dead ends cannot exceed 20 feet

Exceptions

- if occupant load less than 10, one path of travel permitted
- exit direct to exterior stairway need only served by single path of travel to grade

